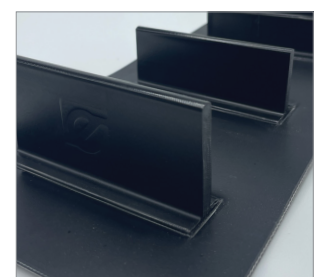
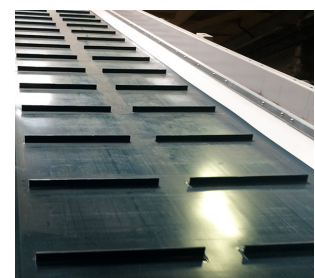
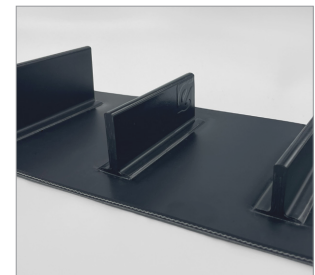
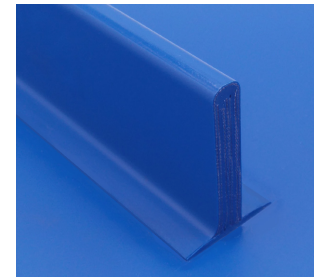
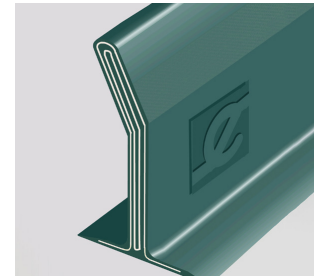
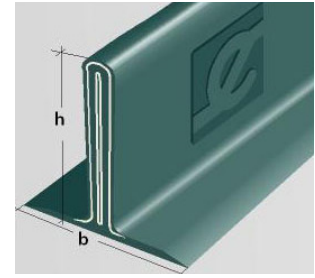


## Reinforced profiles

### Straight and Inclined

	Profile	Dimensions		Transverse		Length (mm)	Color	Material
		b (mm)	h (mm)	Min. Pitch (mm)	Min. $\varnothing$ (mm)			
Straight	NRR030	50	30	70	120	2000	Blue 06, White and Green 00	PVC
	NRR050		50					
	NRR070		70					
	NRR100		100					
Inclined	NIR070	50	68	70	120	2000	Blue 06, White and Green 00	PVC
	NIR100		97					
Straight	URR020	25	20	55	80	2000	Blue 06 and Black	PU
	URR030		30					
	URR040		40					
	URR050		50					
	URR060		60					
	URR090		90					



- For **difficult working conditions**.
- Highly **resistant to impact** on receiving and conveying waste.
- Increase belt **strength and stability** on the conveyor.
- Same chemical resistance as the belt.
- High-frequency welded\*, offering a **perfect union with the belt**.
- High **fatigue and tear resistance**.

\* They can be welded by High Frequency or manually with a Leister type welder.

### Main application sectors

Specially designed for applications involving difficult conditions, in general, all applications in which the profiles undergo impacts on receiving or conveying the material.

- Sorting center for selective waste collection:
  - Waste reception.
  - Separation of paper and cardboard.
  - Classification of containers (plastic bottles, cans...).
- Wood industry.
- Metal industry:
  - Foundry slag.
  - Metal components.
- Meat industry (slaughterhouses: bones, cuts...).